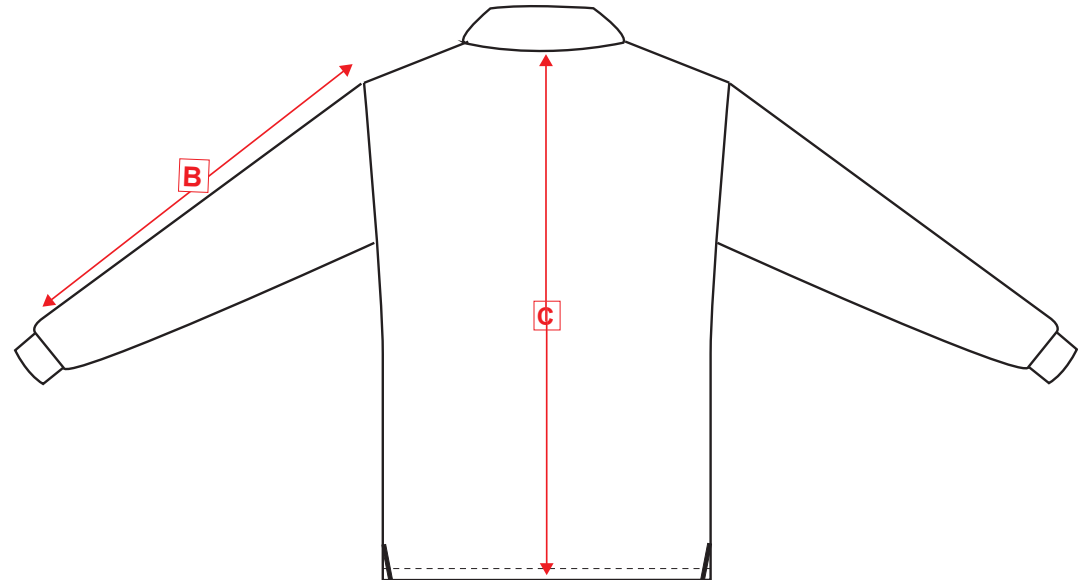
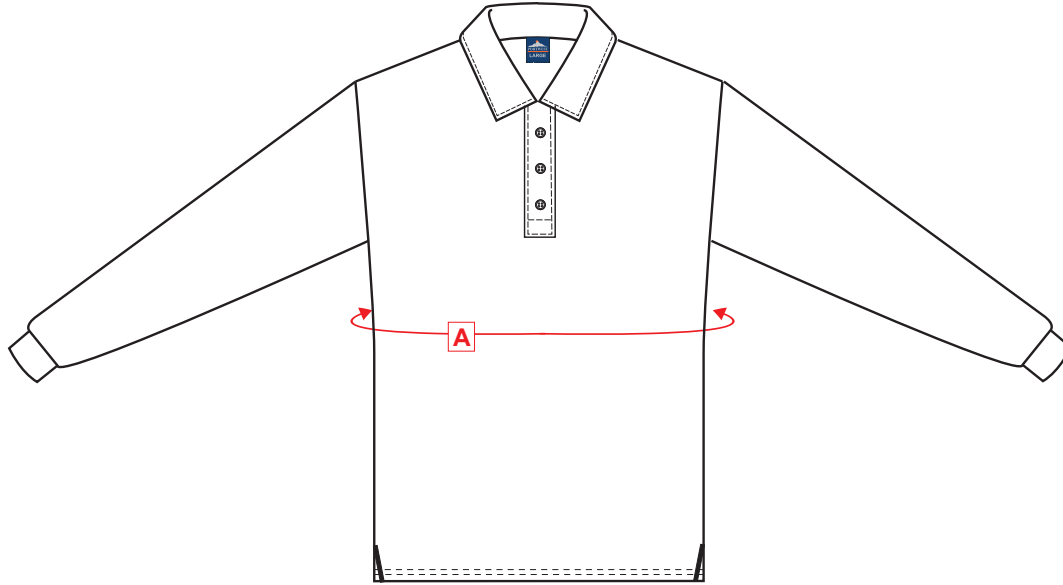


STYLE NO: B212

DESCRIPTION: Long Sleeve Polo Shirt

FABRIC: 65% Polyester, 35% Cotton
210 g/m2 Tight Pique Knit

COLOUR: Navy/Black



A, B & C are GARMENT SIZES

Measurements										
<i>(fully relaxed fabric in cm's)</i>										
AREA		XS	S	M	L	XL	XXL	3XL	4XL	Tol
Full Chest (cm)	A	94	102	110	118	126	134	142	150	+1.5
Outside Sleeve Length Including Cuff	B	61	62	63	64	65	66	67	68	+0.5
Centre Back Length	C	76	76	76	76	76	76	78	78	+1